

Using Templates with Pictures to Exe

What this is about

Do you find yourself having to change Project Options every time you make a slideshow using Pictures to Exe?

Here's an example:

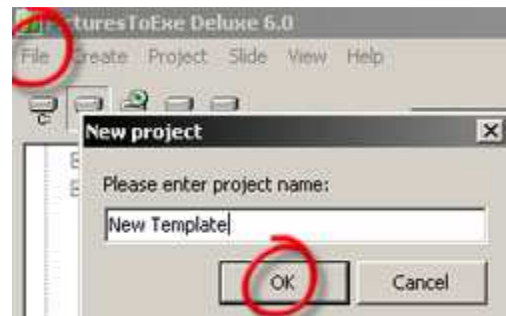
1. For my shows, I prefer to have a longer default display time for every image.
2. The default for Transitions is that all effects are selected. This doesn't really work for most people! It's more likely that you would want to use a fade transition for most slides.
3. The default transition time is about 1½ seconds – rather too quick.
4. If the show is to run continuously, it's a good idea to hide the mouse cursor during the show

and so on...

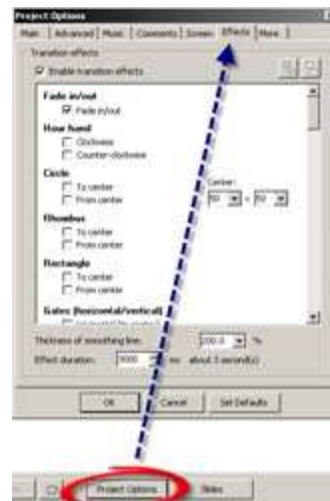
Any option that can be customised via Project Options can be set-up in a template to save having to do this over and over again.

Setting-up defaults

1. With PTE open choose File > New Project and give it a name such as "custom template"

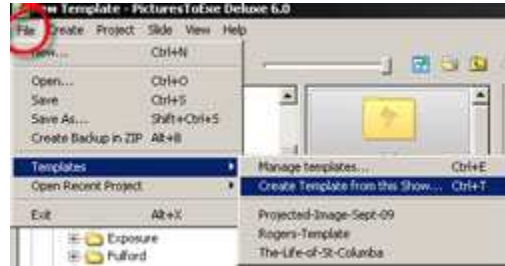


2. Use "Project Options" to select your preferred settings.

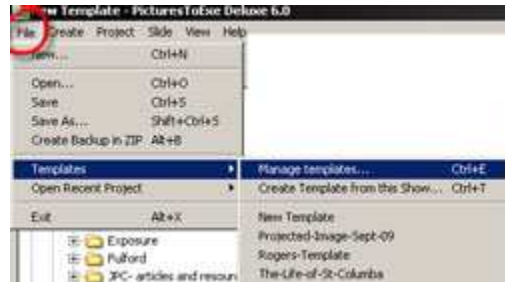


Using Templates with Pictures to Exe

3. Choose
File > Templates >
Create template from
this show



4. Choose
File > Templates >
Manage templates



5. You can now set your
custom template to be
the Default template
for new projects.



That's all there
is to it

You may choose to set-up a range of different templates for future
projects.

You would then select the template you wanted to use as in steps 4 & 5.

