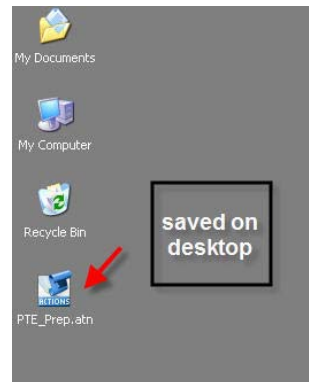


Loading Actions into Photoshop

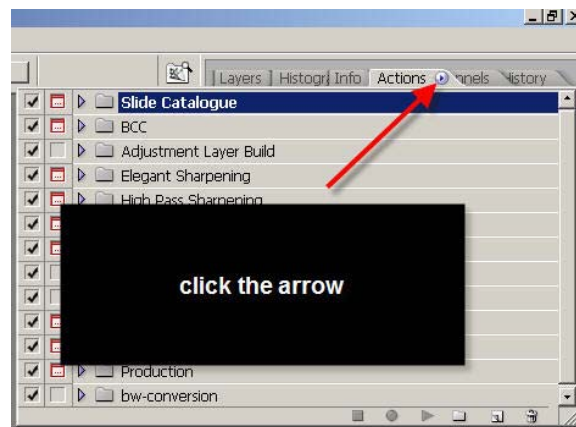
These instructions take you step-by-step through the process of loading an action you have obtained (e.g. from a web site) into Photoshop. The instructions have been tested using Photoshop CS2 but should apply equally to other recent versions.

- 1 Save the action somewhere convenient – e.g. the desktop



- 2 Open Photoshop and make sure the Actions palette is visible. If not, find it under “Window”

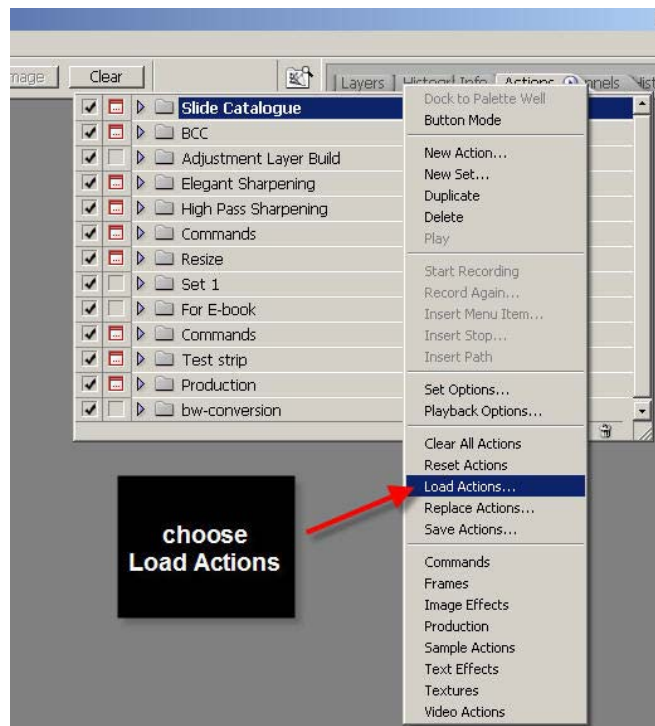
- 3 Click the right arrow for a menu



Loading Actions into Photoshop

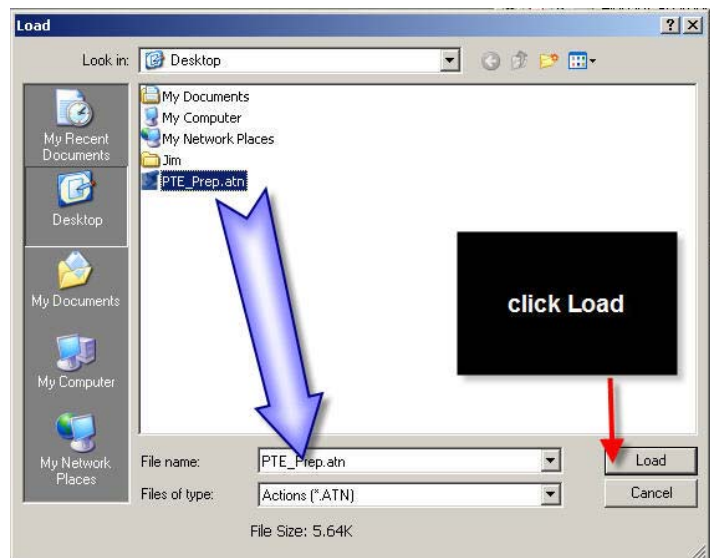
- 4 From the drop-down menu, choose “Load Actions”

then browse to find the action you saved earlier



- 5 Having located the action, click on its name to put it in the “File name” box

then click the “Load” button..



Finished!

