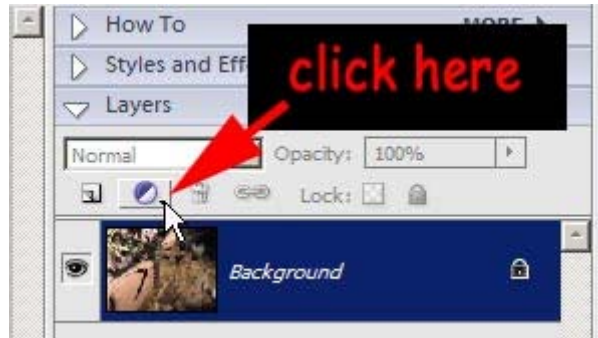


This tutorial shows how layer masks associated with adjustment layers can be used in Adobe Elements 4.

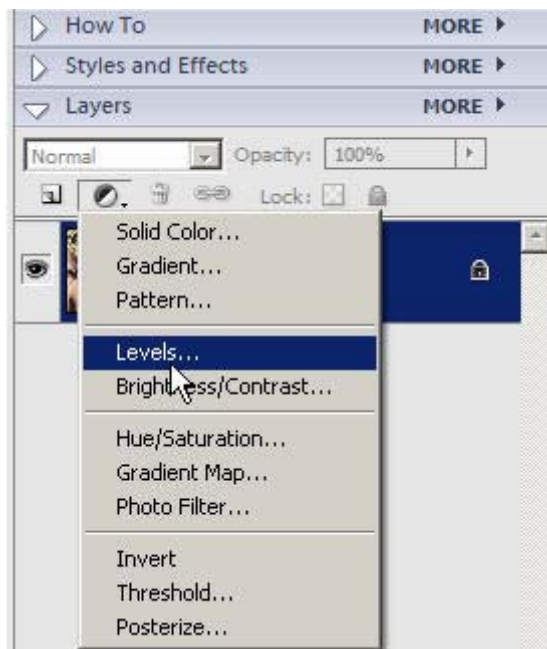
*The image used in this tutorial, Halloween Pennant Dragonfly, is by Mairi Maxwell and is used with permission.*

Getting started

1. Open your image, make sure the layers palette is visible (Window>Layers) & add a levels adjustment layer

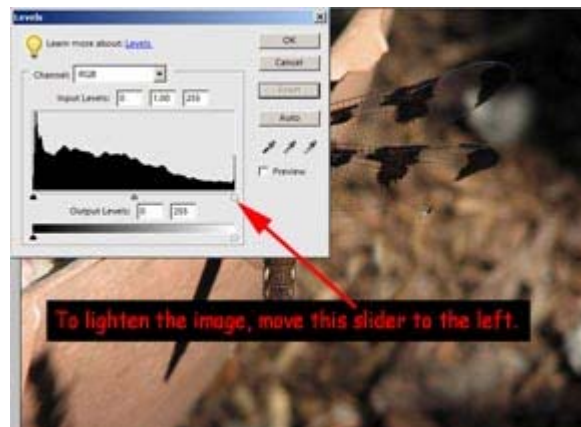


2. From the drop-down list, choose Levels.

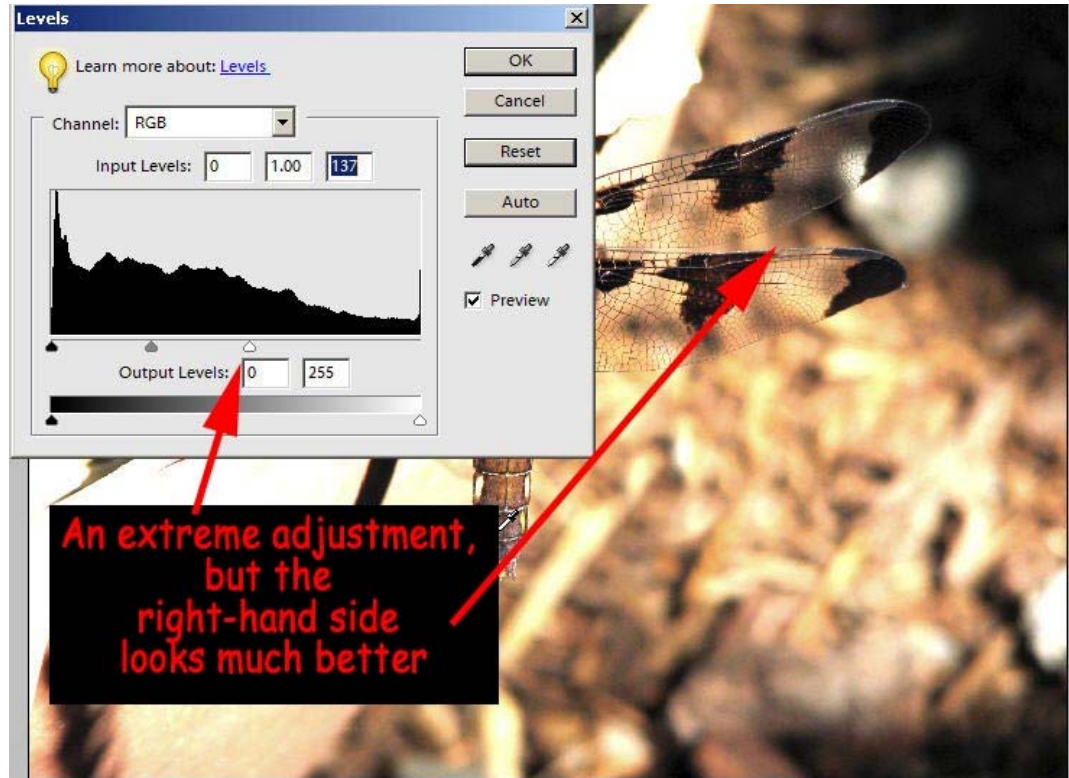


3. Adjust the levels as required. In this case, I've lightened everything a lot (too much) but will correct this using the layer mask.

The result is shown in the screen shot below...

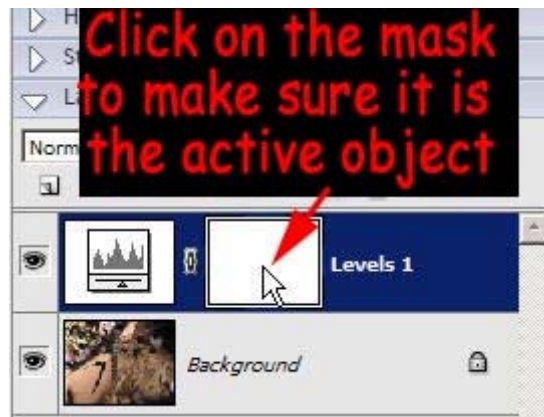


Editing  
the  
layer  
mask



4. Now we need to paint on the mask to bring back the original image except where we need it to be lighter.

Make sure the mask is active by clicking on it, make sure black is your foreground colour and choose a soft brush.



5. Now paint on the areas of your image where you want to reveal the original underneath the adjustment layer.

Painting with black makes a hole in the layer mask.

The screen shot shows where I painted on the mask.



6. The beauty of using the layer mask is that you can carry on refining it as you need. If you make a mistake, simply change the painting colour to white.

Painting with white repairs the hole in the mask.

