

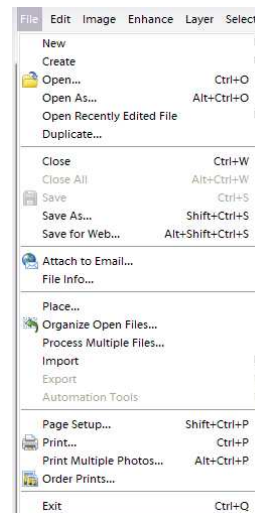
This tutorial covers versions of Photoshop Elements up to, and including, version 5.

Just choose print... ?

Unfortunately it's not that simple. But it is understandable and very satisfying once you know how to make it work.

Using the menu

Choosing File from the menu bar will open this dialogue.



Page Set-up will allow you to check that you have the correct size of paper but you can also do this when you choose Print.

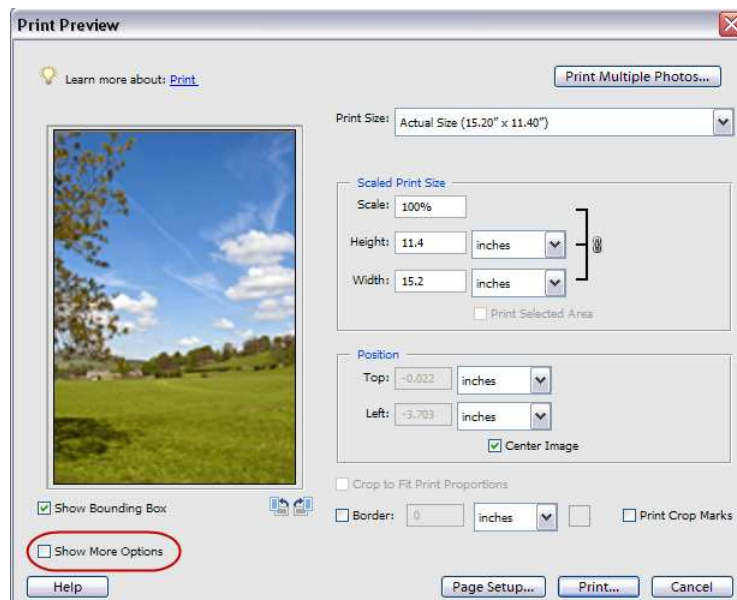
Print “Multiple Photos” and “Order Prints” need not concern us here.

So – just choose Print.

Photoshop Elements print dialogue – 1

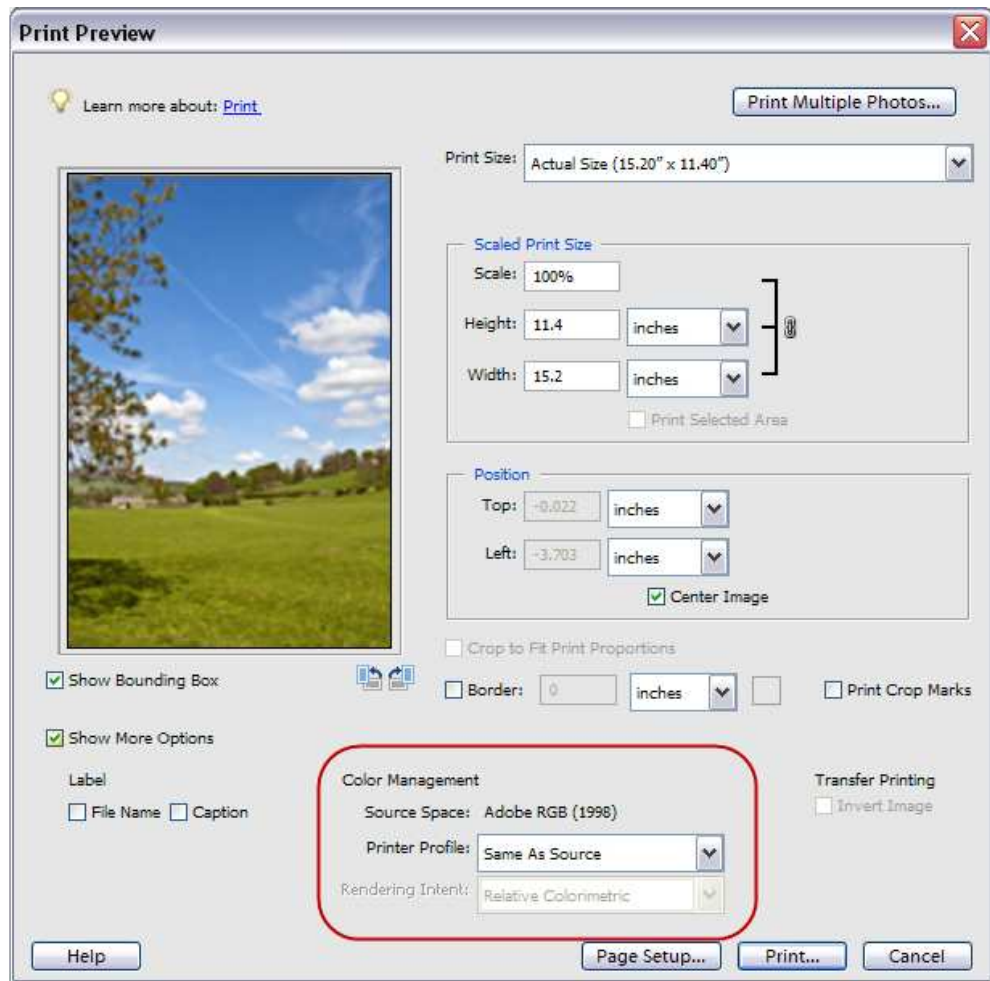
This is not the full dialogue that we need.

Click in “Show More Options” for the rest.



## Photoshop Elements print dialogue – 2

“Colour Management” is discussed below.

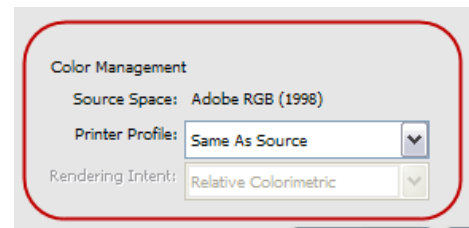


At first sight, this looks quite intimidating. On closer examination, most of it is self-evident and we only need to look at “Colour Management” in detail...

## Colour Handling

In this dialogue, “Source Space” shows that the image we are about to print is in the Adobe RGB colour space.

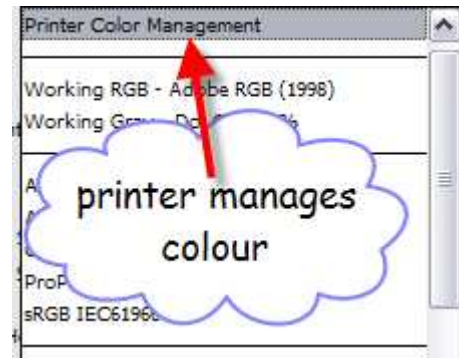
We need to deal with the “Printer Profile”



### Printer manages colours

Clicking the dropdown arrow next to “Printer Profile” opens a list of options.

Many people find that choosing “Printer Colour Management” works well. If you use the printer manufacturer’s own paper and ink, then this option is worth trying.

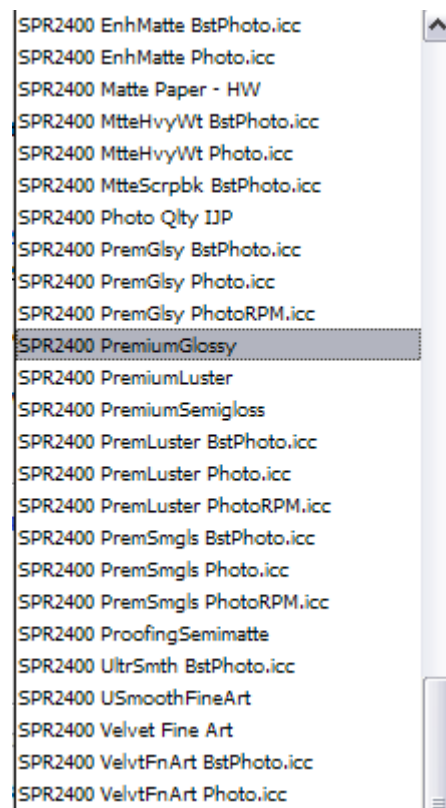


### Elements manages colours

Looking further down the list, any print profiles installed on your computer will be displayed.

Opposite we see some of the Epson profiles for my R2400 printer.

If you use third-party papers and/or inks or you choose to have print profiles made that match your system more accurately, you should choose the correct profile here. In this way you will be making Elements manage the colour rather than allowing the printer to do so.



### Printer Profiles

When you installed your printer, profiles for the manufacturer’s materials would have been installed at the same time. In recent years these profiles have improved a great deal. It’s worth visiting the printer manufacturer’s website from time to time to get the latest profiles.

Other media manufacturers such as Ilford, Permajet, Lyson and Fotospeed provide profiles for their materials. Some will produce custom profiles, free of charge, for your system for their materials.

When you click the down-arrow next to “Printer Profile” you will be presented with a list of all of the profiles on your computer.

You need to choose the one that matches the material you are using.

For example, if I want to print on Epson Archival Matte using my R2400 printer, then I would choose the first option shown opposite.



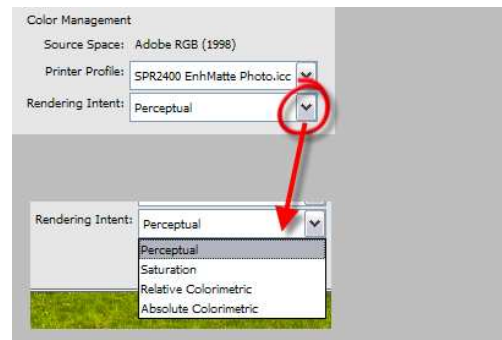
### Rendering Intent

In simple terms, “rendering intent” determines how the information in the image space (e.g. Adobe RGB) is converted to the printer’s colour space.

*For photography the choice is either Perceptual or Relative Colorimetric.*

For most images you’ll find that perceptual works best.

The only way to really decide which to use is to do test prints. The differences will be quite subtle.



### Ready to go

With all these choices made, the next step is to find your way through the printer’s dialogue. This is covered in another tutorial.

