

Batch Processing with Photoshop Elements

If you need to use Elements to carry out the same editing procedure on a lot of images, e.g. in order to resize them and save as JPEGs for use with Pictures to Exe, then you need to use the "Batch" operation provided.

The following tutorial describes in detail how to use these to resize your images prior to using them in Pictures to Exe to Exe.

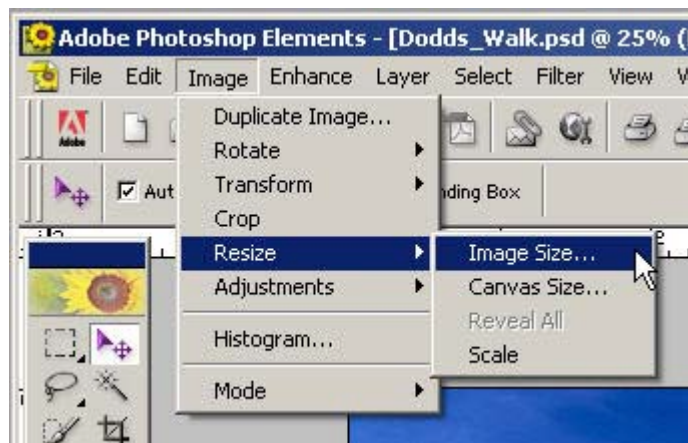
Preliminary work

The first task is to get your images together into two folders - one for landscape and one for portrait format.

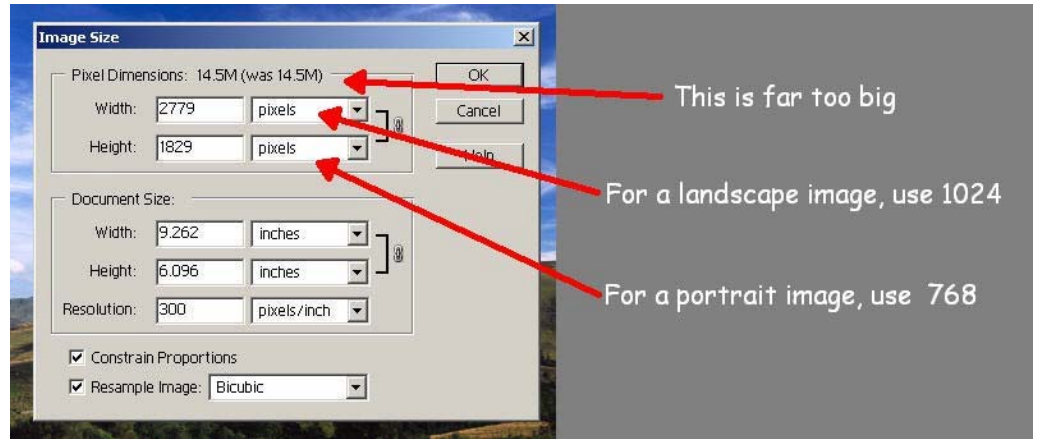


If you only have a few images, you may choose to resize them individually, as follows...

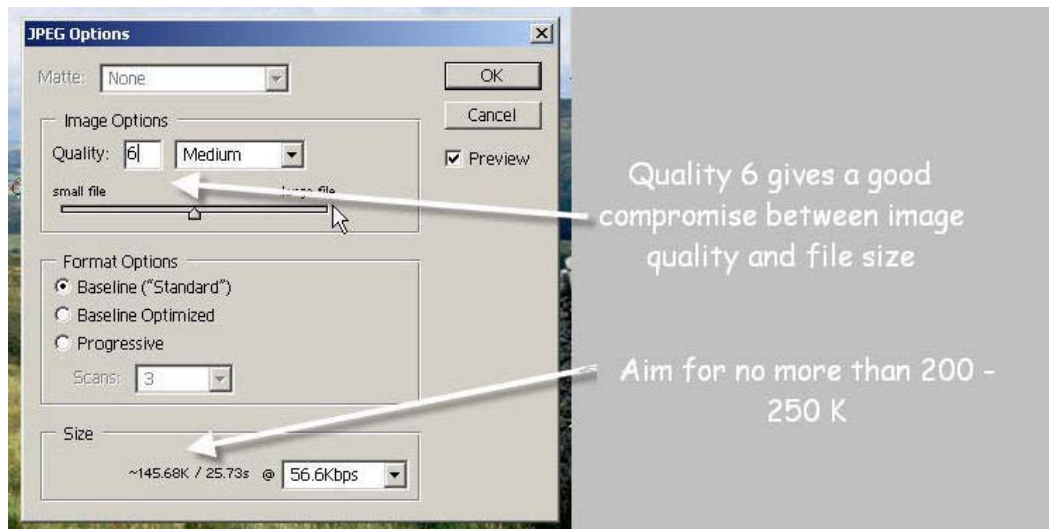
3. Resize the image by choosing Image > Resize > Image Size.



4. Enter the new width in pixels then click OK.



5. Now save the resized image in jpg format for Pictures to Exe.

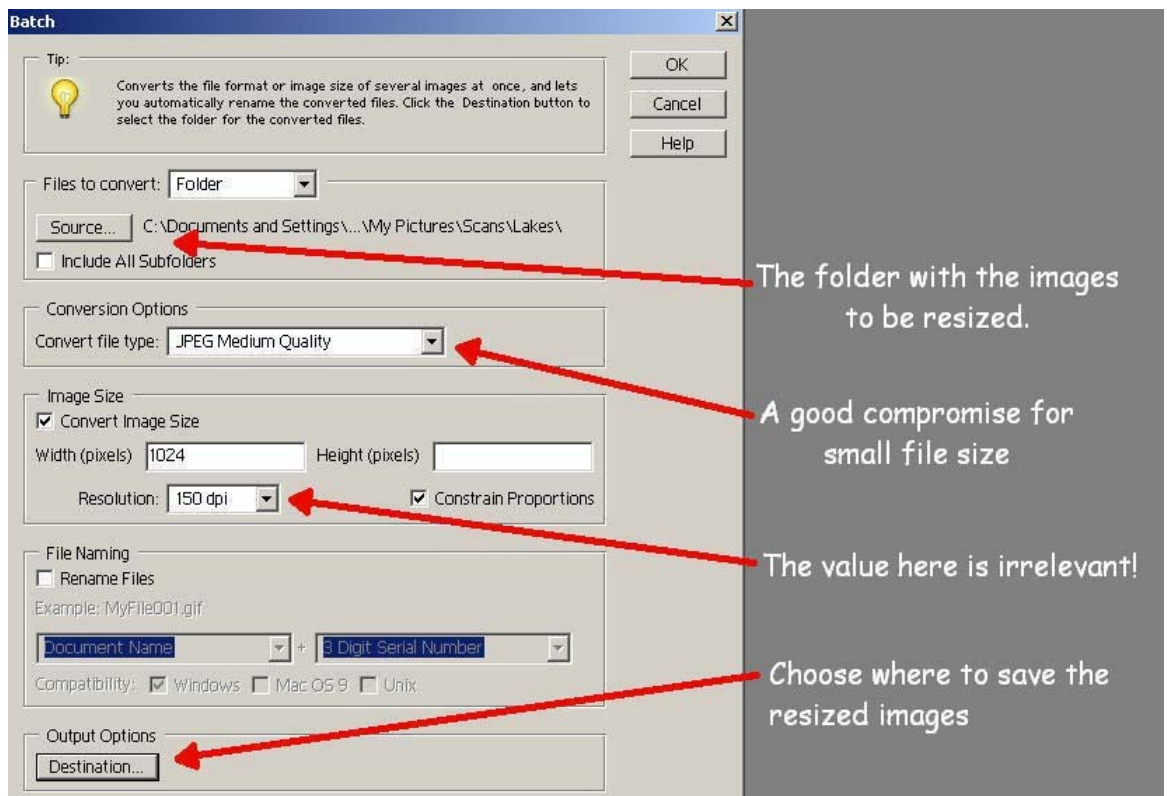


Batch Processing in Photoshop Elements

In Elements,
choose
File > Batch
Processing

Set options as
shown opposite,
then click OK.

Elements will
now
automatically
open each image
in the specified
folder, resize
the image to
1024 pixels
wide, then save
the image in the
chosen
Destination
folder.



Repeat the above to automatically resize the Portrait-format images, leaving the Width box blank and setting the Height to 768 pixels.