

N.B. It's a good idea to scan through this entire document before starting work on your slideshow.

Preliminary work

Before you produce your first PTE (Pictures to Exe) show you need to do some preliminary work:

1. Make sure that the pictures you wish to use are saved in jpg format at a suitable size for screen display (see below), and are all in the same folder.
2. Choose the music you want to use and save it as an MP3 file using suitable software.
Be careful not to breach copyright regulations. You can obtain Royalty Free music from a number of sources – a good place to start is: <http://www.beckhamdigital.co.uk/royaltyfreemusic.htm>

NB – it's a very good idea to make sure that all your resized images and the music are kept together in a new folder for each individual slideshow.

Resizing images in Photoshop

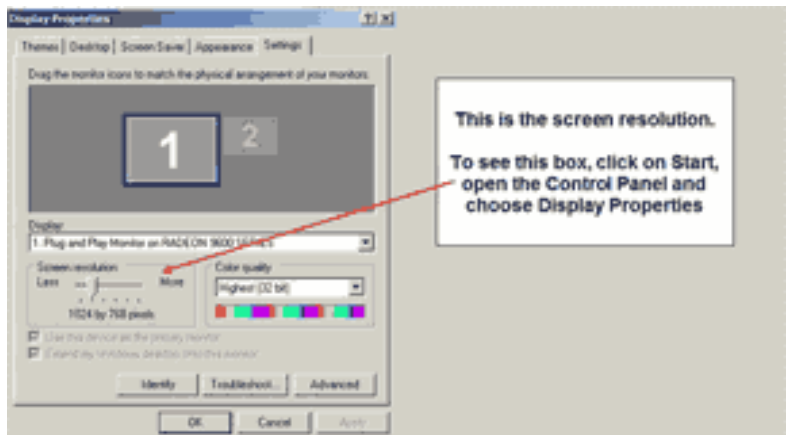
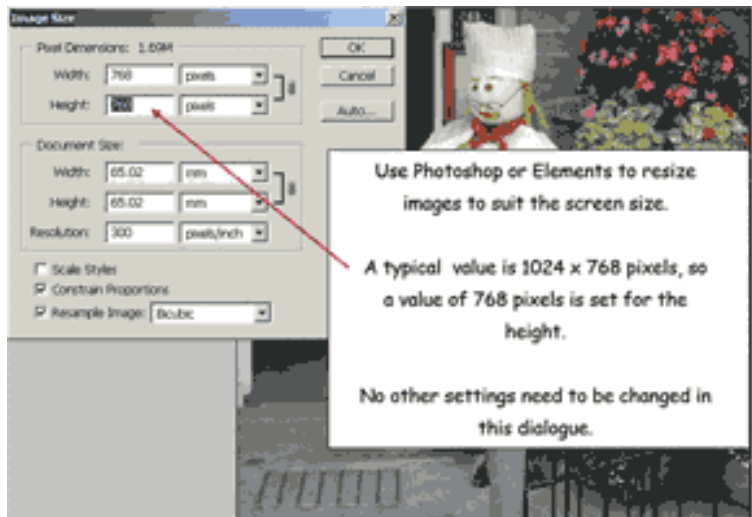
Use Image > Image Size

Choose a suitable image size to suit your screen resolution – if you're not sure what this is, you can find out by using:

Start > Control Panel > Display

To find your current screen settings, click on:

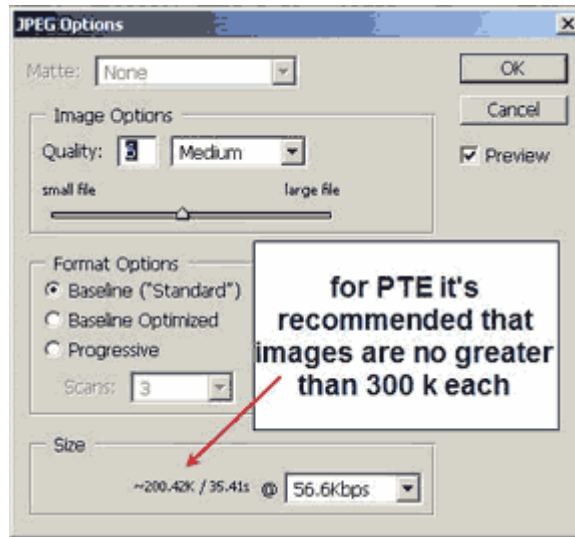
Start > Control Panel > Display > Settings



Save your pictures using: File > Save As
selecting jpg format

The settings shown give a reasonable balance between file size and quality. It's important that the individual image sizes you use in PTE are not too big: - aim for 100-330 K.

Alternatively, use "Save for Web" to get a better idea of how your saved images will look on screen.



Using crop

If your images are not in the correct proportions (4:3) for the normal screen display –e.g. from a scanned transparency, you'll need to crop them. In this case, you can set the dimensions of the crop tool to be 1024 pixels x 768 pixels (or whatever size you need) before cropping.

If you're building a show with a lot of such images, add each one as a separate layer in a composite image then crop them all together. With CS2, it's easy to export the layers to separate files (see below).

Photoshop CS2

If you are the proud possessor of CS2, you'll find 2 very useful options:

1. File > Automate > Fit image is an alternative way of resizing images conveniently.
2. File > Scripts > Export Layers to Files is very useful because you can build your show in layers then export each layer on its own to make the final show. I find this particularly useful for constructing title sequences.

Easy does it

Getting all your images to the correct size and saving them in JPG format can take quite some time. The good news is that the process can be automated (in Photoshop or Elements) using Actions and Batch Processing.

Details of these can be found on the Bishopthorpe Camera Club Website at:

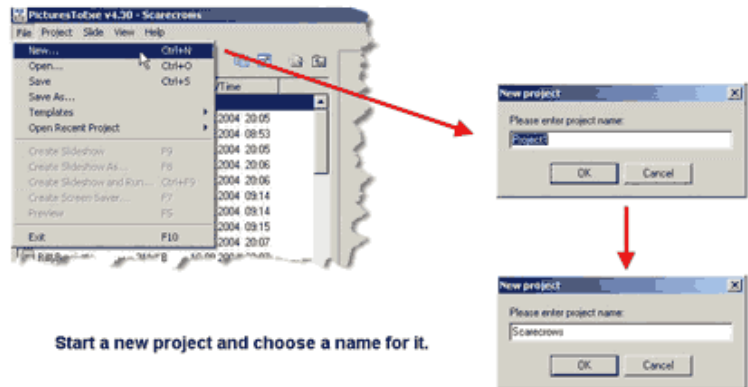
<http://www.bishopthorpe-camera-club.com/Resources/resources.htm>



Getting started with Pictures to Exe - revised for version 4.48

Using PTE - create the project

Having opened PTE, choose
File > New
and enter a name for your project.

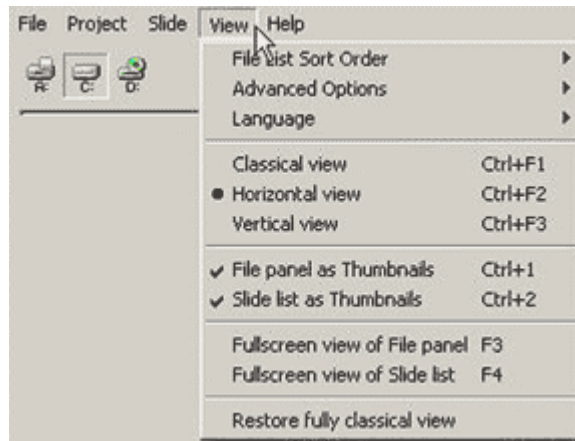


Screen layout options

PTE offers a number of alternative
screen views.

You may wish to experiment with
the various layout styles available.

The options opposite give the
layout shown below...



This is horizontal view, with
thumbnails for both the slide panel
and slide list.



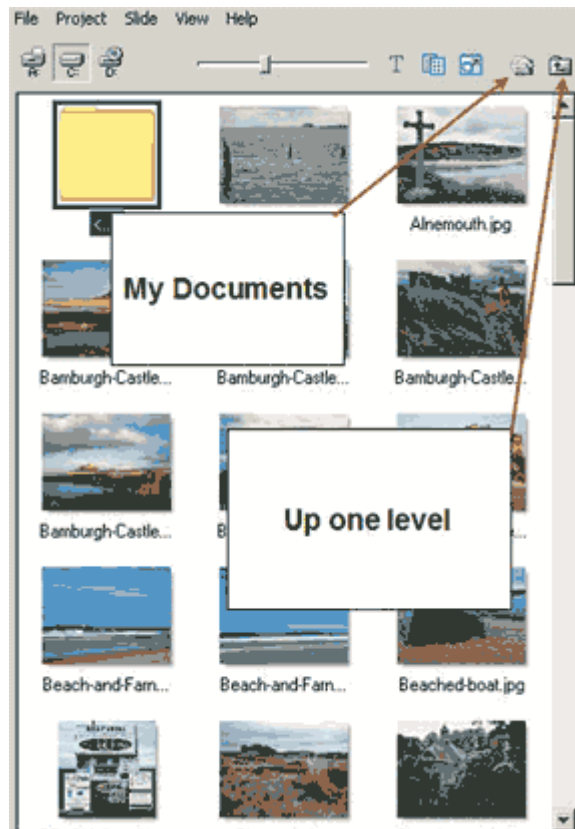
Find the pictures

Now you need to find the pictures you prepared and saved earlier...

At first sight this can be a bit confusing. Taken in order from left to right, the various buttons are:

- The A, C and D drives on the computer.
- The slider controls the size of the file panel thumbnails (not shown unless the thumbnail selection is active).
- If the T-button is selected, filenames are displayed under the thumbnails.
- The “two-pages icon” toggles between thumbnail and text in the file panel.
- The “page and arrow” icon displays the images as on a light box.
- The “open folder” icon is a shortcut to your “My Documents” folder
- The final icon moves back one step in the directory structure.

It's worth experimenting with these until you're familiar with their function.



Add them to the show

Use "Project" > "Actions on File List" to add images to your slide show.

If you have a folder containing all the images you wish to use, the easiest way is to choose "Add All Pictures to Slide List"



Here's an example of a project with pictures selected and added.



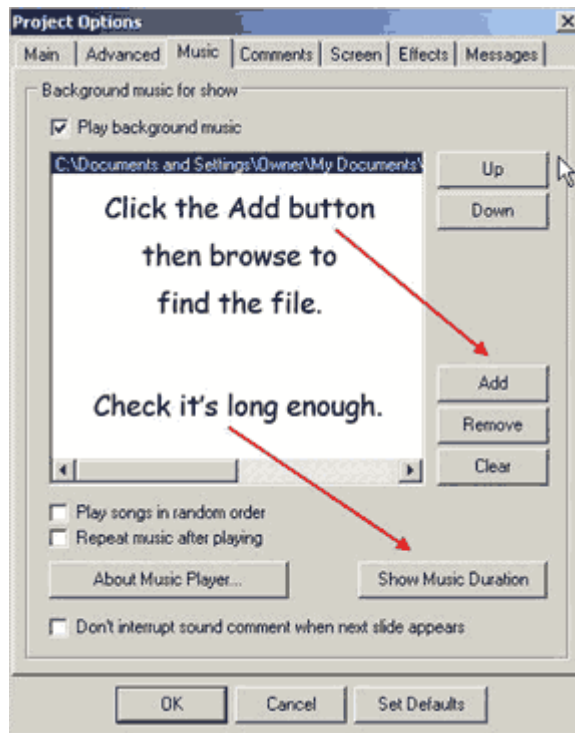
What the buttons do

Now have a good look at the buttons at the bottom of the screen. These are used to set-up your show...



Adding the music

Click Project Options and choose the Music tab to add music to your show:



Check it out

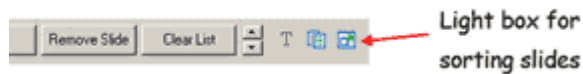
At this stage you might want to see if all this is going to work. Click on the Preview button to find out.



Now you might want to do some “fine-tuning”. Perhaps you might like to alter the slide order or customise the transitions between the slides.

Re-order the pictures

The easiest way to rearrange your pictures is to go to “slide sorting box” view then simply drag them into the order you want.

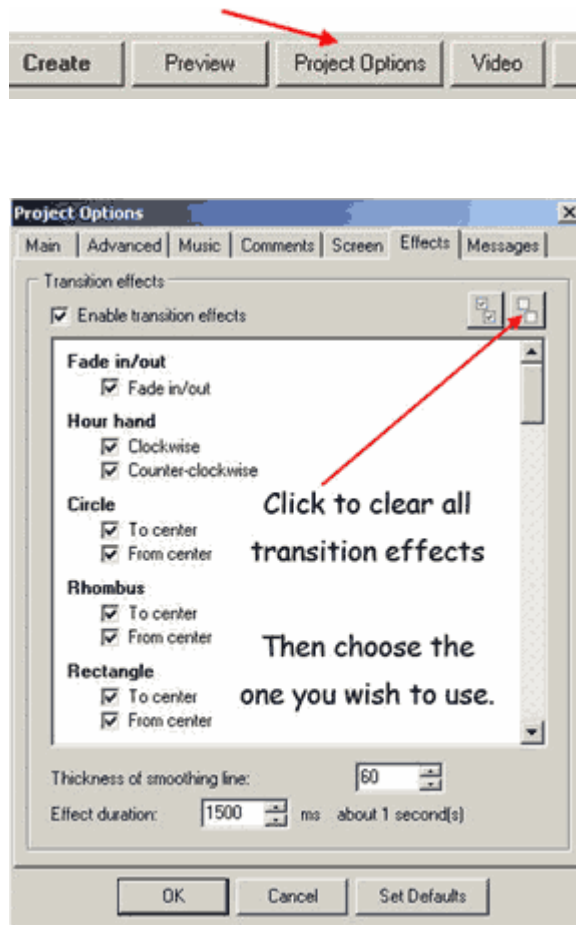


Change the transition effects

The transitions are found by pressing the “Project Options” button and clicking the “Effects” tab.

It will probably look like this...

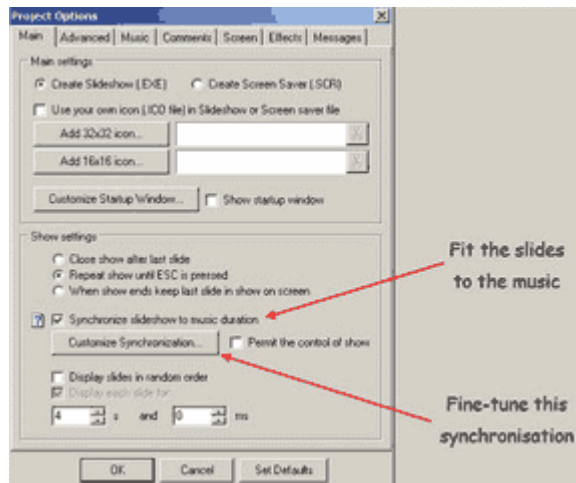
If you clear the transition effects list, you can then simply tick the effect(s) you want to use.



Make the show fit the music

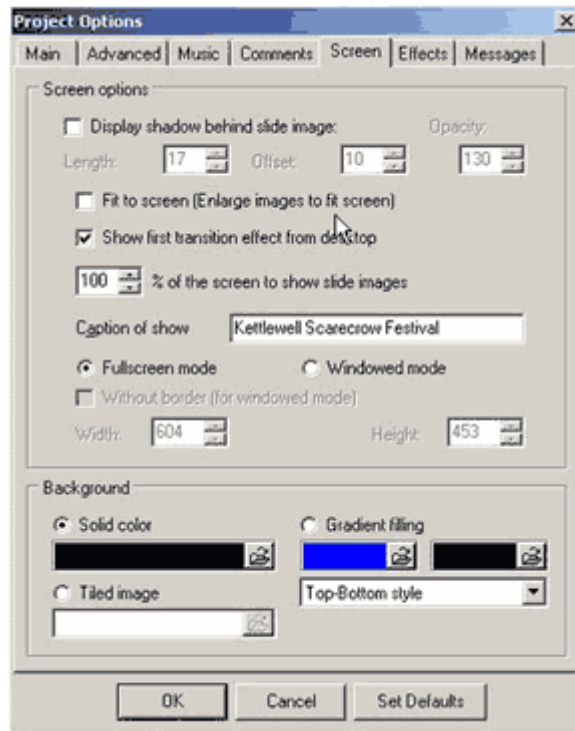
Some more adjustments you might want to make.

Experiment with Customize Synchronisation to see how much control this offers.



**Adjust how
the show
appears on
screen**

Play with these options – they’re fairly easy to get used to.
“Show first transition effect from the desktop” gives a nice feel to the start of a show.



Finished

1. You will, of course, save your project at regular intervals as you work. It’s a good idea to save it in the same folder as your resized images and music.
2. To create the final, self-contained, slideshow use the Create button or select File > Create Slideshow As. This produces an .exe file that can be copied to and run on any PC.

NB – *the .exe file cannot be edited once it is produced*, so it’s a very good idea to keep the original images, music and .pte file together in a folder. If you don’t it’s a safe bet that you will want to edit your show at some time in the future. Without these files, you will have to start again from the very beginning!

