

## Using Matworks

Matworks is a stand-alone utility (for Windows platform only) that deals with the calculations involved in matting a print for framing.

It can be downloaded from:

<http://www.gt-photography.com/matworks.html>

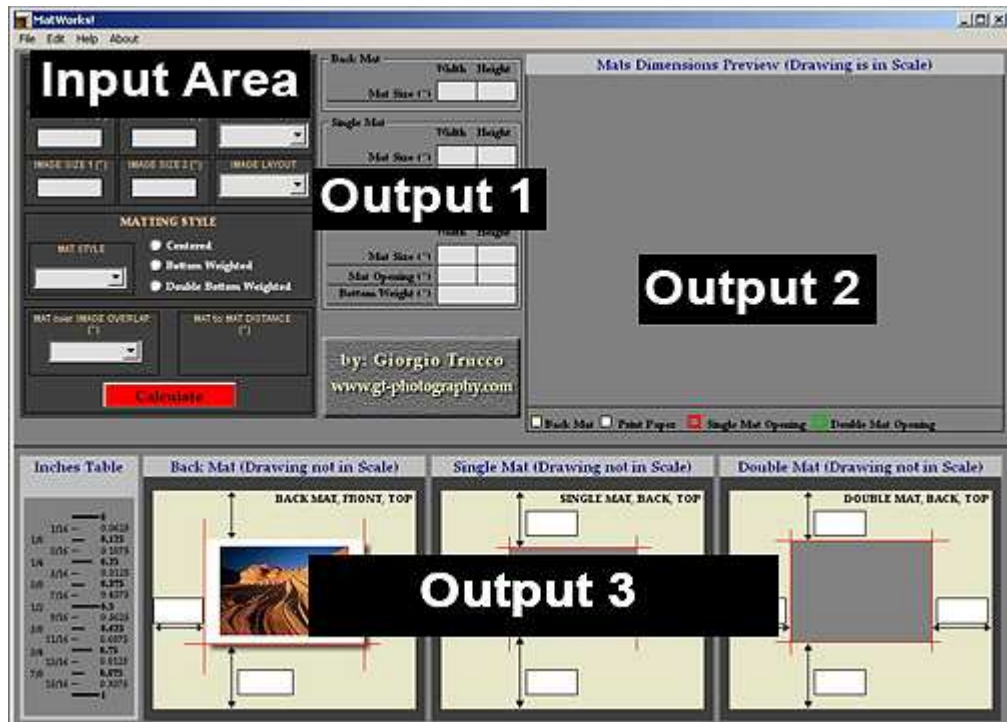
### Starting Matworks

This screen is displayed as the program loads.

Once loaded, there is just one user-window, shown below...



### The user interface



*The Input Area is where you enter the details of your image and mat. The three Output Areas show the results of the calculation, providing all the information needed to cut the mat and affix the image.*



## Using Matworks

### Using the program

1. Measure the paper size to the nearest 1/16<sup>th</sup> of an inch
2. Measure the image size to the nearest 1/16<sup>th</sup> of an inch
3. Measure the mat size to the nearest 1/16<sup>th</sup> of an inch

NB to the left of Output 3 is a handy converter for fractions of an inch to 1/16ths of an inch.

### Example 1

In this first example, the dimensions have been selected to keep things very easy indeed. In fact, you wouldn't need the program for this but it gives a useful introduction to how it works!

The screenshot shows the Matworks software interface with the following fields and labels:

- Mat Size**: Points to the MAT SIZE 1 (") field containing 20.
- Paper Size**: Points to the PRINT SIZE 1 (") field containing 16.53.
- Image Size**: Points to the IMAGE SIZE 1 (") field containing 16.
- Mat Style & Layout**: Points to the MAT STYLE dropdown menu containing 'Single Mat'.
- Image Overlap or Border**: Points to the MAT over IMAGE OVERLAP (") field containing 0.

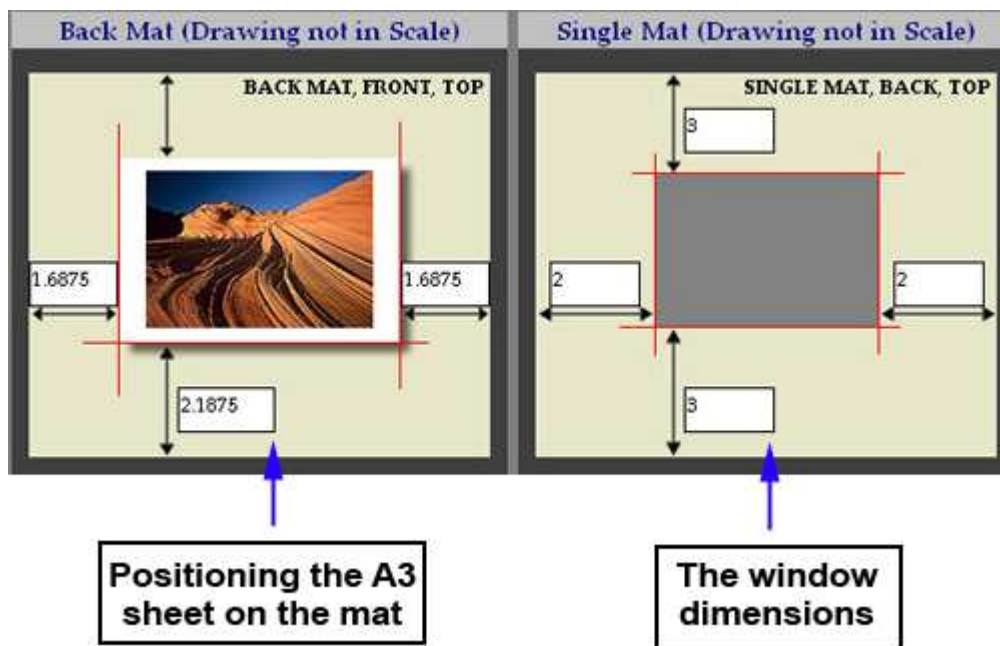
The interface also includes fields for MAT SIZE 2 (") (16), PRINT SIZE 2 (") (11.69), IMAGE SIZE 2 (") (10), and MAT LAYOUT (Landscape). A MATTING STYLE section contains radio buttons for Centered, Bottom Weighted, and Double Bottom Weighted. A MAT to MAT DISTANCE (") field is also present. A red Calculate button is at the bottom.

Here are the figures for a 20 x 16 inch mat to be used with a 16 x 10 inch print, on A3 paper (16.53 x 11.69).

Simple arithmetic tells us that we would need side borders of 2 inches and top/bottom borders of 3 inches.

This is confirmed by the figures from Output 3, shown on the next page.

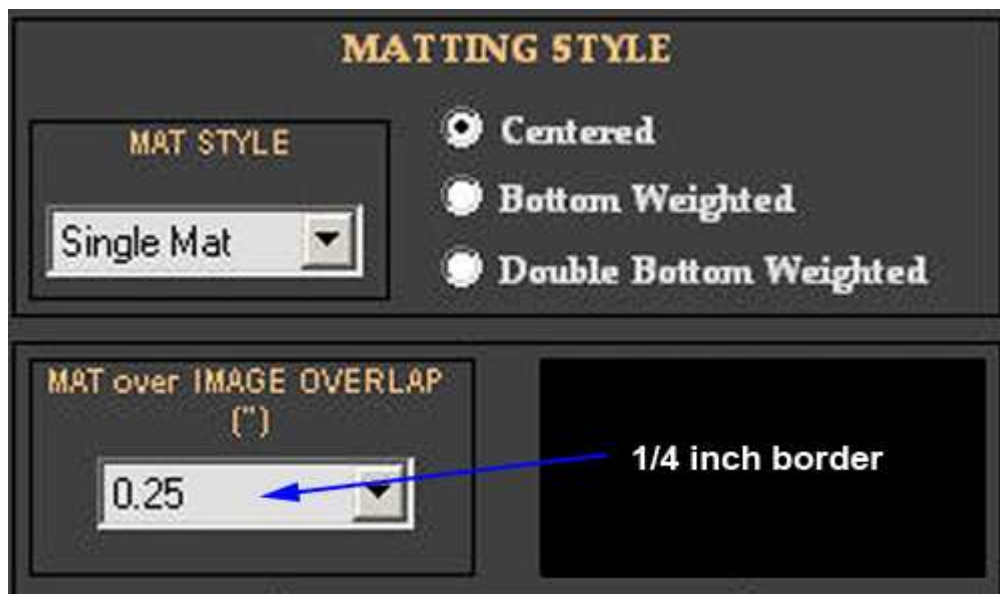
## Using Matworks



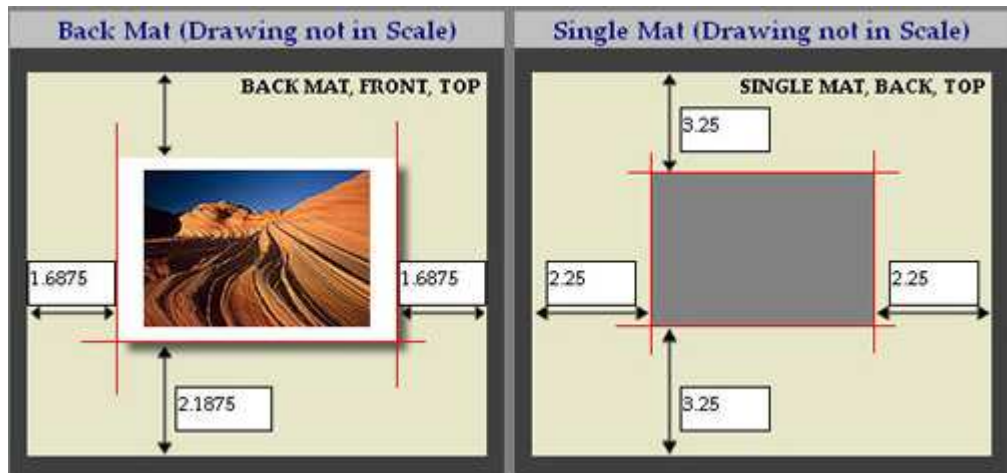
*The figures on the left help when trying to line-up the print behind the mat's window.*

### Example 2

This example is as above, except that this time we are going to leave a 1/4 inch border visible



## Using Matworks

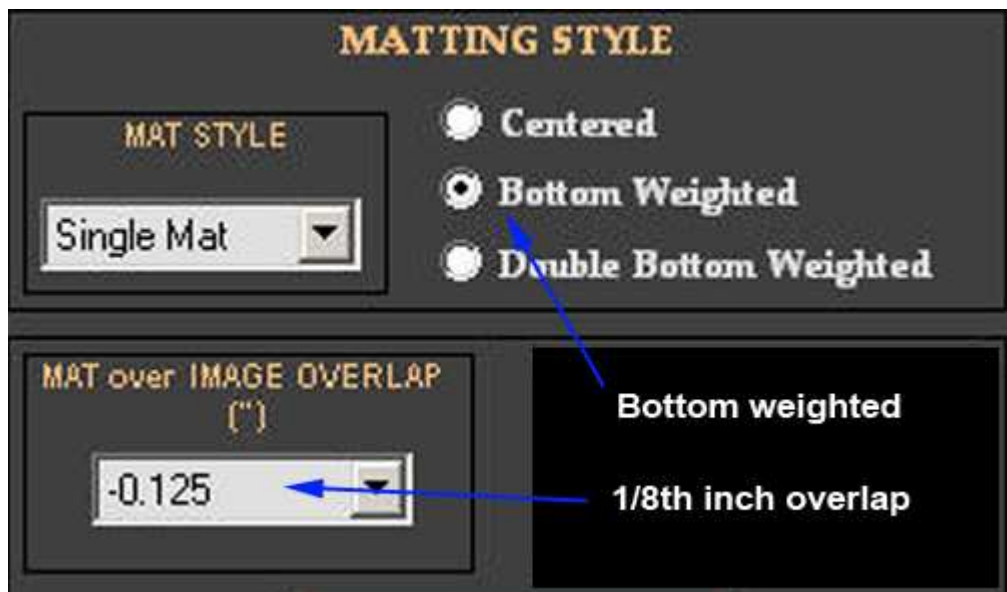


*Compare these results with the first example.*

### Example 3

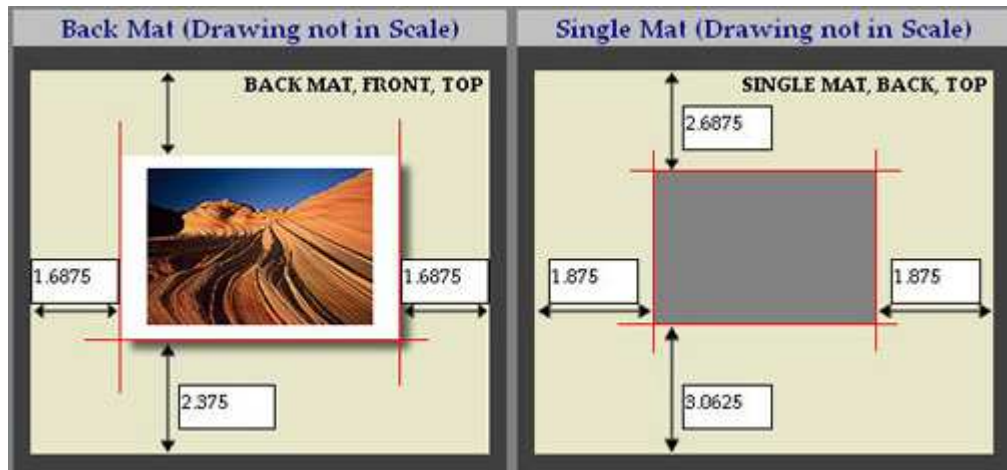
Same dimensions once again, but this time the mat will overlap the image by  $1/8^{\text{th}}$  inch and the bottom margin will be larger.

This is a fairly standard choice.



## Using Matworks

---



*Remember, the ready-reckoner will help you  
to convert the decimals into fractions of an inch*

### **Final example**

In this final example, we will use a double-mat for an extra-special look.

The second mat will leave a  $\frac{1}{2}$  inch border on the first mat.



MAT SIZE 1 (") 20	MAT SIZE 2 (") 16	MAT LAYOUT Landscape
PRINT SIZE 1 (") 16.53	PRINT SIZE 2 (") 11.69	PRINT LAYOUT Landscape
IMAGE SIZE 1 (") 16	IMAGE SIZE 2 (") 10	IMAGE LAYOUT Landscape

**MATTING STYLE**

MAT STYLE: Double Mat

Centered  
 Bottom Weighted  
 Double Bottom Weighted

MAT over IMAGE OVERLAP (")  
-0.125

MAT to MAT DISTANCE (")  
0.5

**Calculate**

The right-hand panel of Output 3 shows the cutting dimensions for the second mat.

