

If you have other version of Photoshop, the dialogue boxes are slightly different.

There are separate tutorial for these.

Just choose print... ?

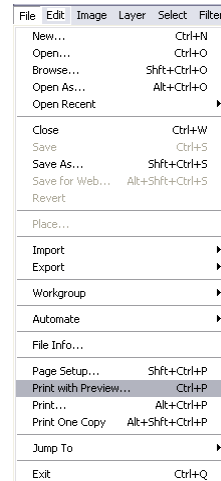
Unfortunately it's not that simple. But it is understandable and very satisfying once you know how to make it work.

Using the menu

Choosing File from the menu bar will open this dialogue.

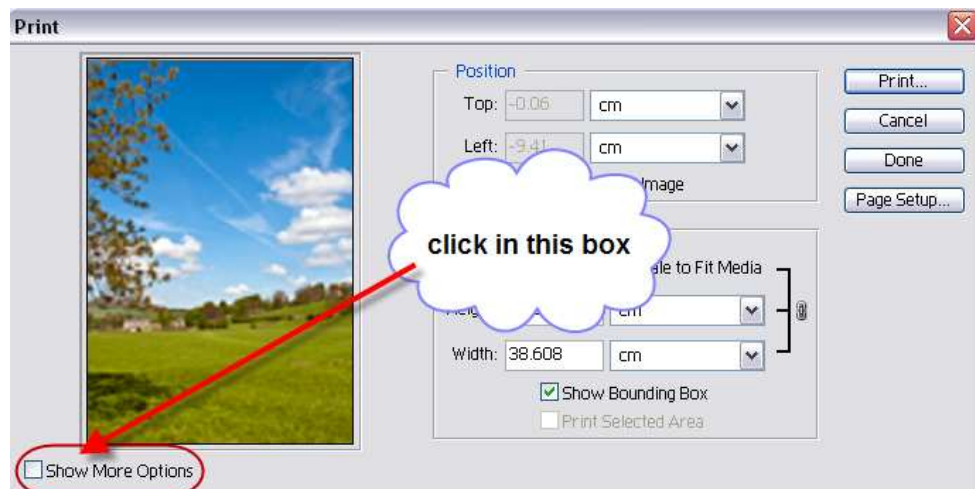
Page Set-up will allow you to check that you have the correct size of paper but you can also do this when you print.

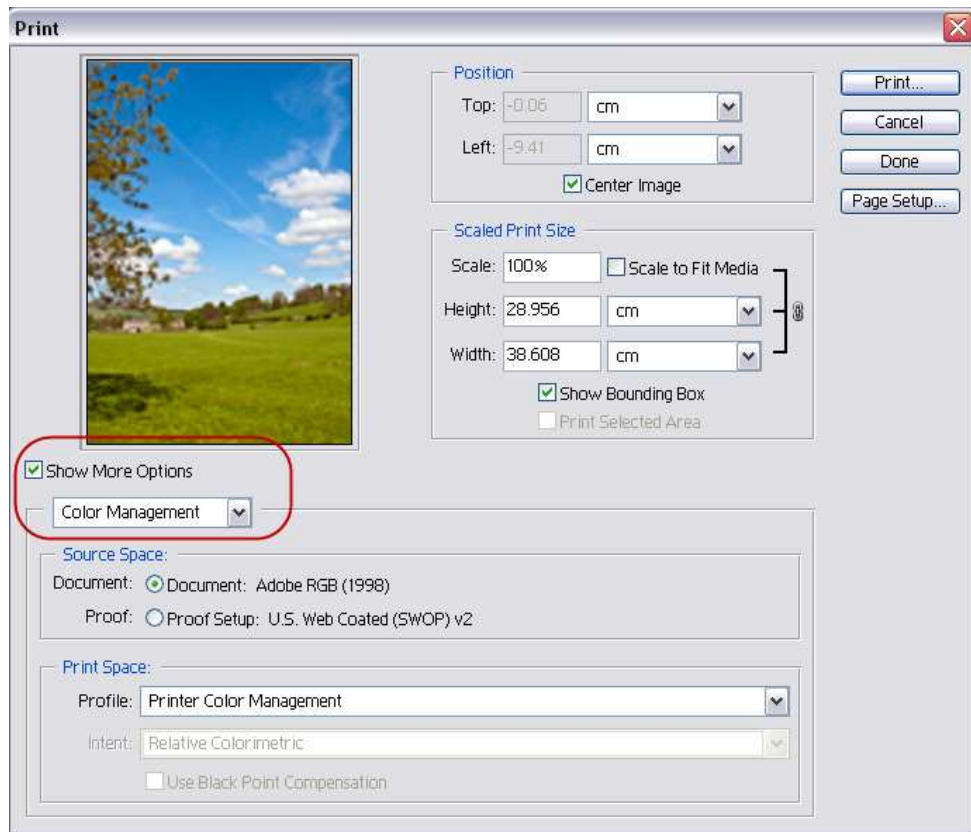
The choice we need is “Print with Preview”.



Photoshops print dialogue.

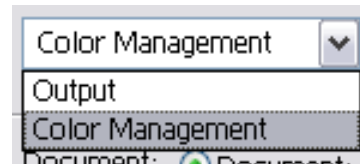
If your print dialogue looks like this, then click in “Show More Options”



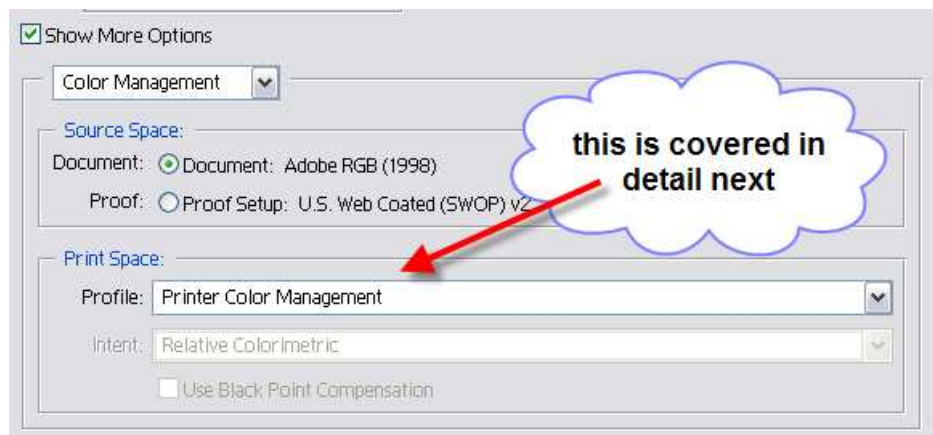


At first sight, this looks quite intimidating. On closer examination, most of it is self-evident and we only need to look at “Colour Management” in detail...

If you see “Output” instead of “Colour Management”, just click on the down arrow and change it.



Print Space



Printer Colour Management

Using the drop-down arrow next to “Profile” we decide how the image will be translated from the document profile (Adobe RGB in this case) to the printer’s colour space. The options are to let the printer manage the conversion or to have Photoshop do the conversion.

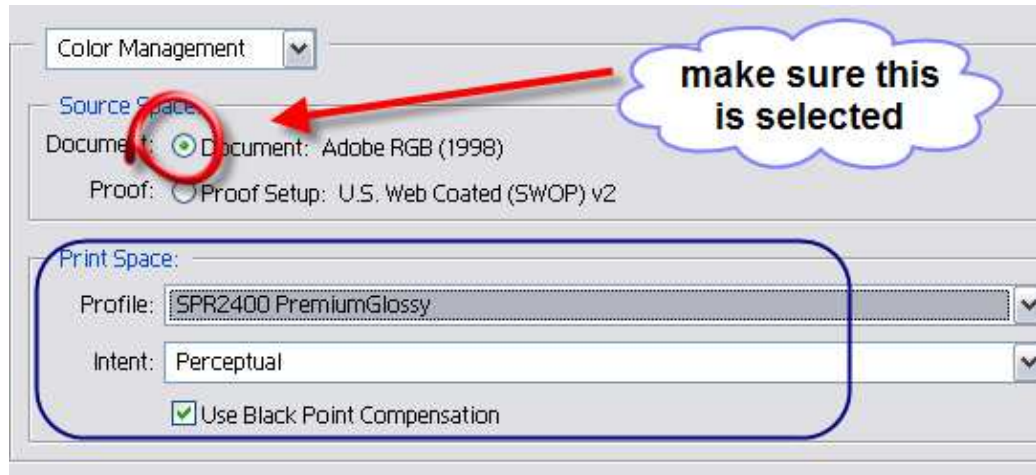
Many people find that choosing “Printer Colour Management” works well. If you use the printer manufacturer’s own paper and ink, then this is option is worth trying.

If you use third-party papers and/or inks or you choose to have print profiles made that match your system more accurately, you should let Photoshop manage the conversion.

Letting Photoshop manage colours

Make sure that “Document” is selected & not “Proof”

To use this method, we need to choose the Printer Profile and the Intent.



Printer Profiles

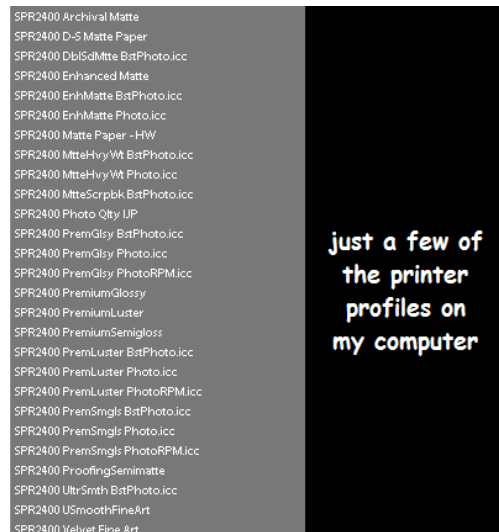
When you installed your printer, profiles for the manufacturer’s materials would have been installed at the same time. In recent years these profiles have improved a great deal. It’s worth visiting the printer manufacturer’s website from time to time to get the latest profiles.

Other media manufacturers such as Ilford, Permajet, Lyson and Fotospeed provide profiles for their materials. Some will produce custom profiles, free of charge, for your system for their materials.

When you click the down-arrow next to “Printer Profile” you will be presented with a list of all of the profiles on your computer.

You need to choose the one that matches the material you are using.

In the example above, I’ve chosen the profile for Epson Premium Glossy paper.



Intent

In simple terms, “Intent” determines how the information in the image space (e.g. Adobe RGB) is converted to the printer’s colour space.

In this example, a photograph that is tagged with the Adobe RGB profile will be printed using an Epson R2400 printer on Epson Premium Glossy paper, using the Perceptual Rendering Intent.

For photography the choice is either Perceptual or Relative Colorimetric.

For most images you’ll find that perceptual works best.

The only way to really decide which to use is to do test prints. The differences will be quite subtle.

Ready to go

With all these choices made, the next step is to find your way through the printer’s dialogue. This is covered in another tutorial.