

Before we start

The layout and options of the print driver vary from make to make, model to model, and operating system to operating system.

What follows is a detailed description of how to proceed with an Epson R2400 printer on Windows XP.

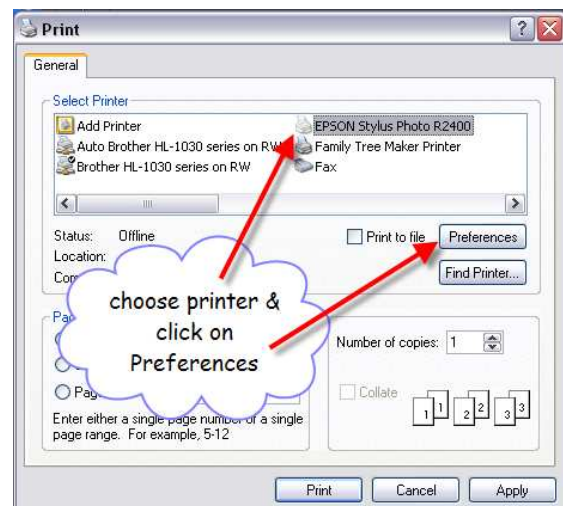
If you follow this carefully, it should help you to understand your own system.

These instructions assume that you have already made the correct settings in the print dialogue of your version of Photoshop or Elements, as described in a previous tutorial.

As discussed in the previous tutorial, you can choose either to let the printer manage colour or to have Photoshop/Elements manage colour. These options are discussed at the appropriate point below...

When you choose print, you may see this window if you have more than one printer installed on your computer.

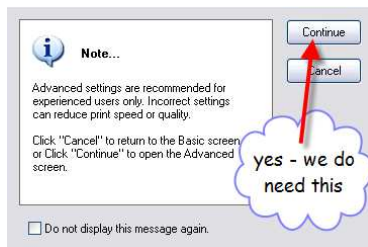
Choose the correct printer then click on Preferences.



Printing Digital Images – finding your way round the printer driver

This basic window opens first.

As it does not have all the controls we need, we click on “Advanced”.



If you see this warning, it might be worth checking the “Do not display this message again” as we definitely do need to see the Advanced settings!

Printing Digital Images – finding your way round the printer driver

Choices

You need to choose the correct paper as this determines how much ink is laid down.

If you're using third-party papers, there is usually a recommendation as to which setting to use with the paper.



When using “Printer Manages Colours”

ICM = “internal colour management”

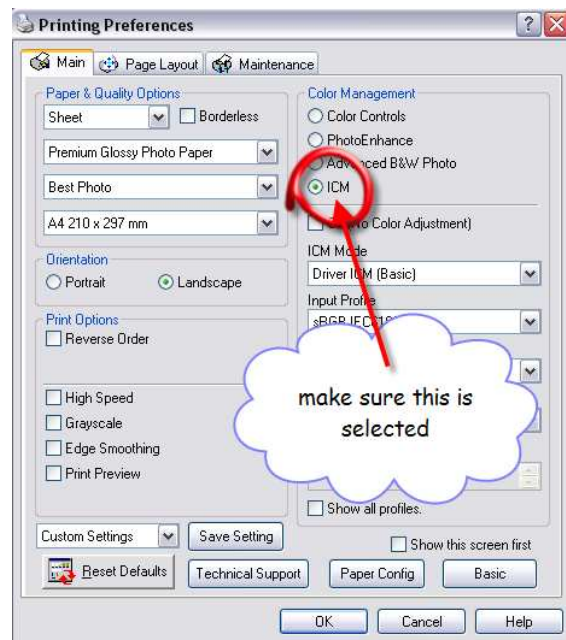
In this example, a landscape-format image is to be printed on Epson Premium Glossy Photo Paper.

“Best Photo” has been chosen.

ICM is turned on so that the colour is managed accurately.

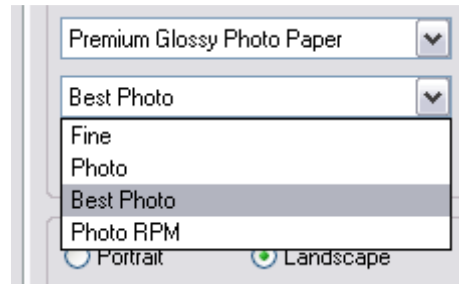
“Edge smoothing” is only needed if you are printing graphics. For photographic images it should always be off.

You may find that printing with “High Speed” on is OK.



Some more options.

“Photo RPM” is the highest quality but it takes a lot longer to print than “Best Photo” and it’s hard to see a difference.



Double-check these settings:

- Correct paper
- Quality option
- Orientation
- ICM checked



When using “Photoshop or Elements Manages Colours”

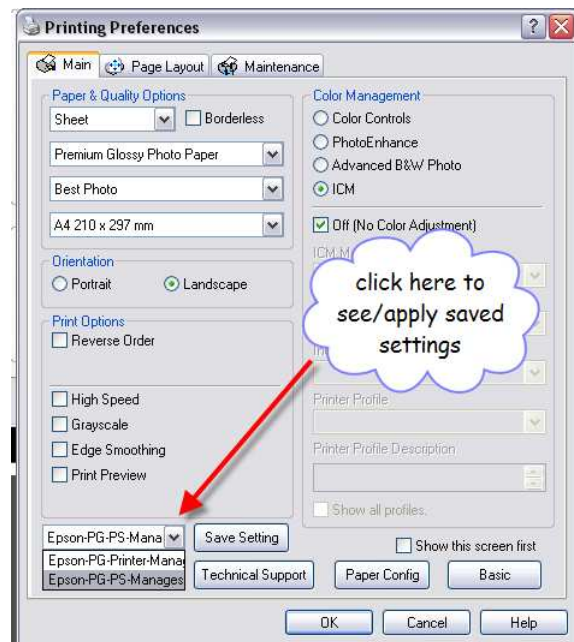
The difference here is that we also choose “Off – No Colour Management” to ensure that the colour management will be from Photoshop/Elements without the printer doing it as well.



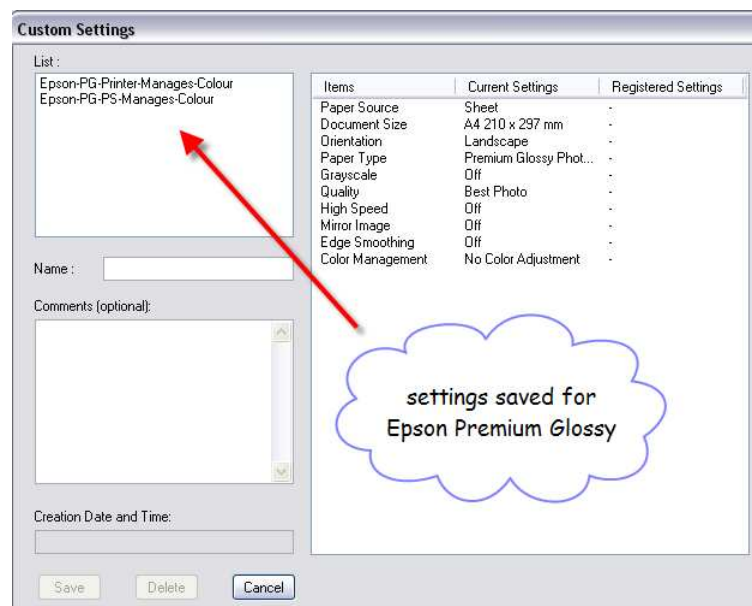
Printing Digital Images – finding your way round the printer driver

Saving all these settings

You may find it helpful to save your settings so that you can recall them next time you print on the same material.



Example of saved settings



This may all look very complicated at first but it gets easier with practice. If in doubt, make (and use) a checklist.

